

# Heaven and Earth Designs

## Little Angel In The Sky

Chart No: HAEZIN 184

By Michele Sayetta

Copyrighted Artwork Zindy S. D. Nielsen



Finished Design Size 352 W by 266 H (14 WX 10-5/8 H inches on 25ct)

Heaven and Earth Designs LLC

1373 45th Ave SW

Willmar MN 56201

320-214-7998

<http://www.heavenandearthdesigns.com>

**TM/© 2008 Zindy S. D. Nielsen**

**<http://zindy-zone.dk/>**

## Instructions

The model for Little Angel In The Sky is recommended to be stitched over 1 on 25 count Dublin Linen. Please use 1 strand of floss or 2 depending on your coverage preference. Charts are recommended to be stitched from page 1 top left to the last page bottom right.

It is recommended that you make working copies and enlarge to view detail and symbols.

You may also use the tent stitch or full crosses depending on your preference.

This is a large project that will offer many hours of stitching pleasure.

We thank you for purchasing this design and welcome any questions or comments that you may have.

Heaven and Earth Designs LLC

TM/© 2008 Zindy S. D. Nielsen  
<http://zindy-zone.dk/>

**Pattern Name:** Little Angel In The Sky-Nielsen

**Designed By:** Michele Sayetta

**Company:** Heaven and Earth Designs











**Copyright:** 2008

**Fabric:** Linen 25, White

352w X 266h Stitches

**Size:** 25 Count, 14w X 10-5/8h in

### Floss Used for Full Stitches:

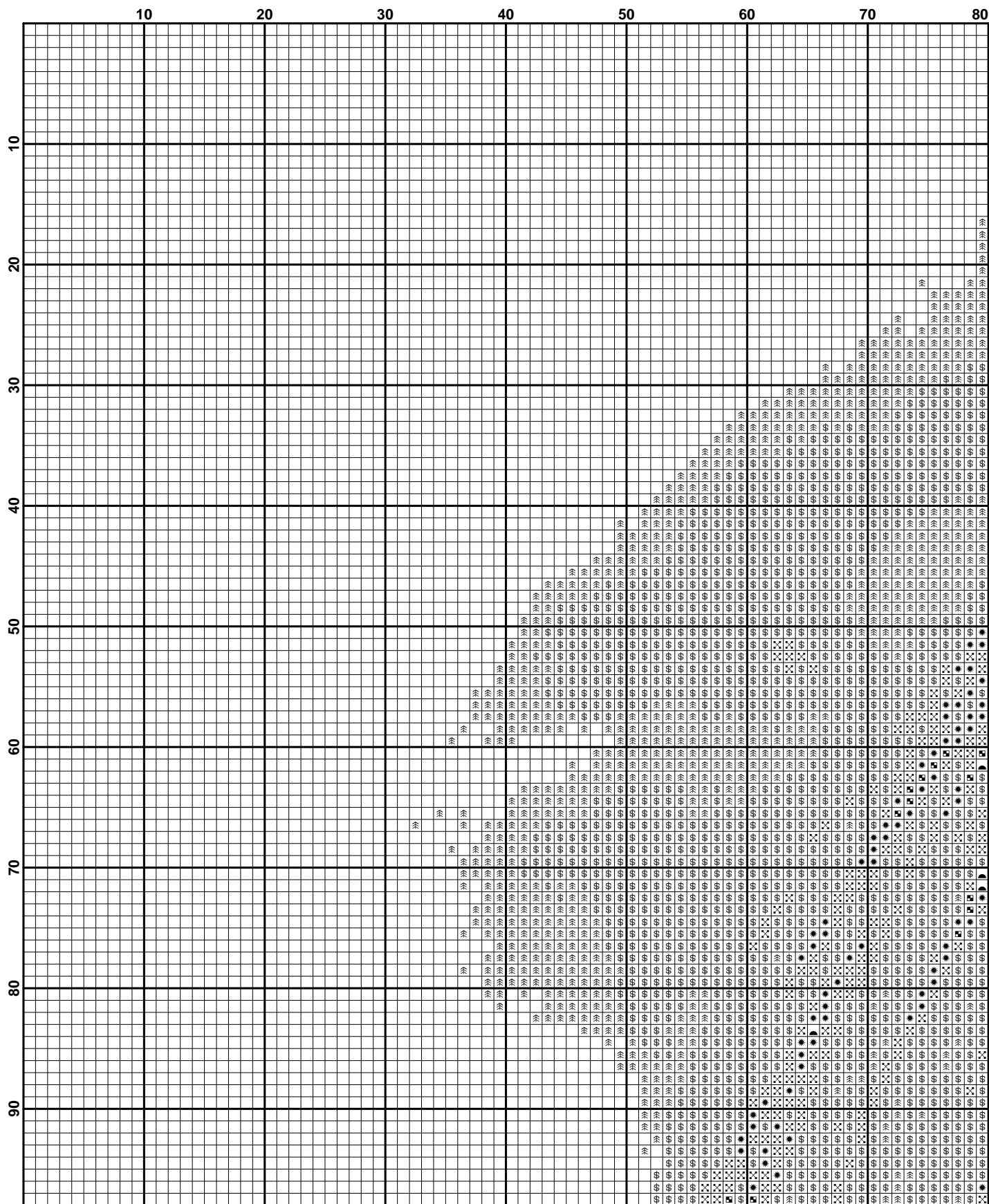
Symbol	Strands	Type	Number	Color
	2	DMC	317	Pewter Gray
	2	DMC	318	Steel Gray-LT
	2	DMC	413	Pewter Gray-DK
	2	DMC	415	Pearl Gray
	2	DMC	451	Shell Gray-DK
	2	DMC	452	Shell Gray-MD
	2	DMC	453	Shell Gray-LT
	2	DMC	762	Pearl Gray-VY LT
	2	DMC	3799	Pewter Gray-VY DK
	2	DMC	B5200	Snow White

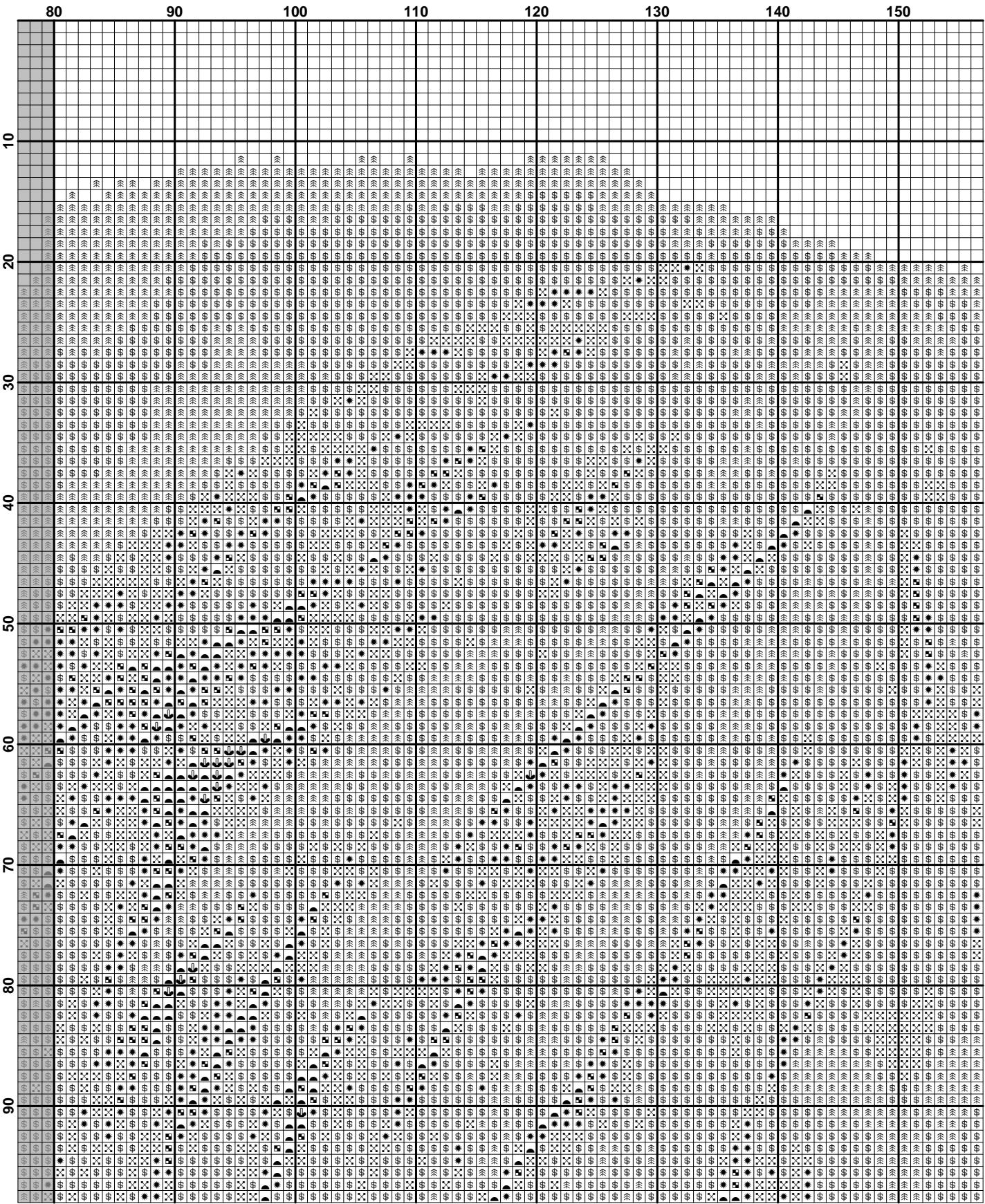
## Usage Summary

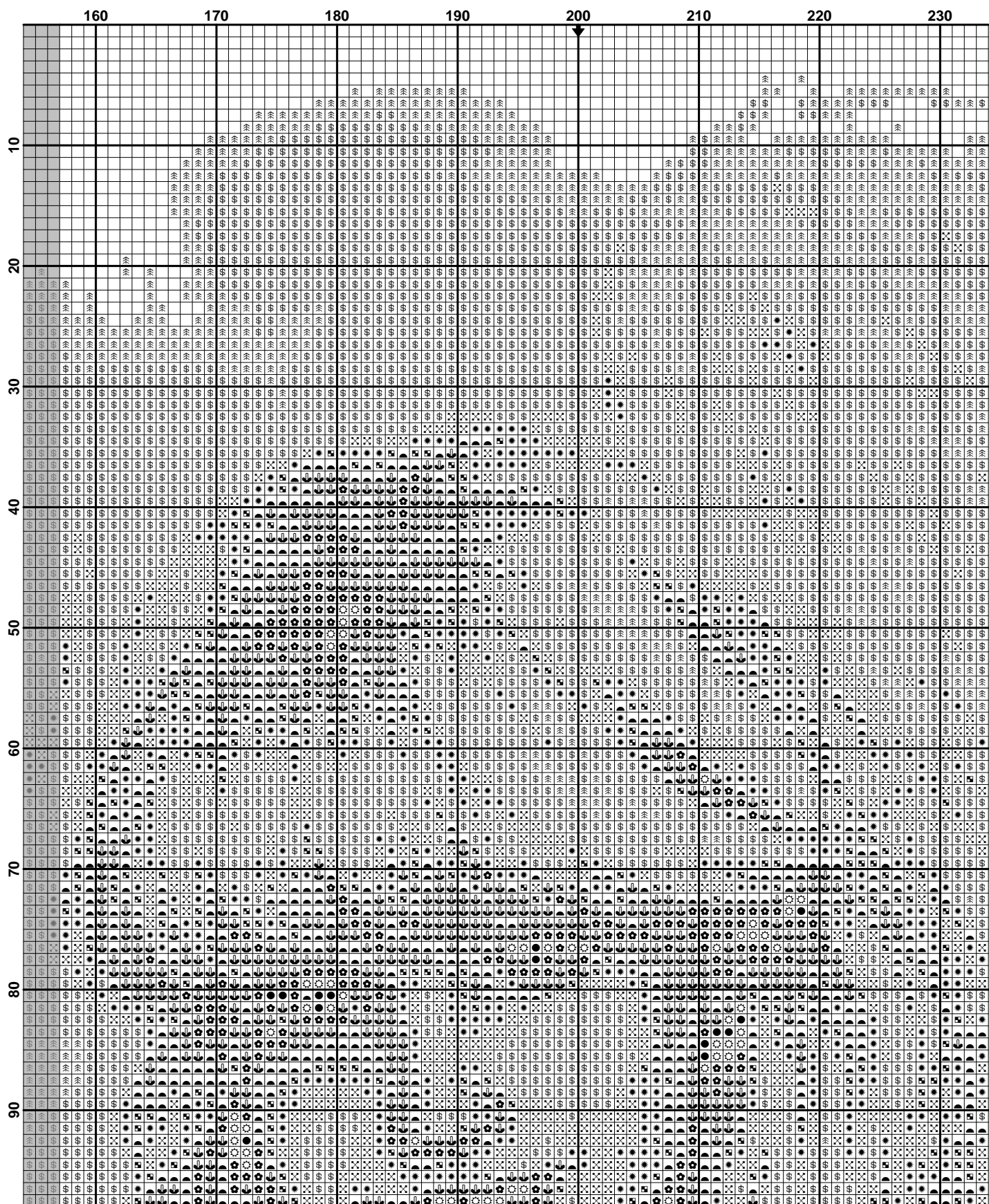
Strands Per Skein: 6

Skein Length: 313.0 in

Type	Number	Full	Half	Quarter	Petite	Back(in)	Str(in)	Spec(in)	French	Bead	Skein Est.
■ DMC	317	907	0	0	0	0.0	0.0	0.0	0	0	1.000
■ DMC	318	3070	0	0	0	0.0	0.0	0.0	0	0	1.000
■ DMC	413	221	0	0	0	0.0	0.0	0.0	0	0	1.000
■ DMC	415	4431	0	0	0	0.0	0.0	0.0	0	0	2.000
■ DMC	451	2341	0	0	0	0.0	0.0	0.0	0	0	1.000
■ DMC	452	2034	0	0	0	0.0	0.0	0.0	0	0	1.000
■ DMC	453	7403	0	0	0	0.0	0.0	0.0	0	0	3.000
■ DMC	762	36768	0	0	0	0.0	0.0	0.0	0	0	11.000
■ DMC	3799	53	0	0	0	0.0	0.0	0.0	0	0	1.000
□ DMC	B5200	13309	0	0	0	0.0	0.0	0.0	0	0	4.000



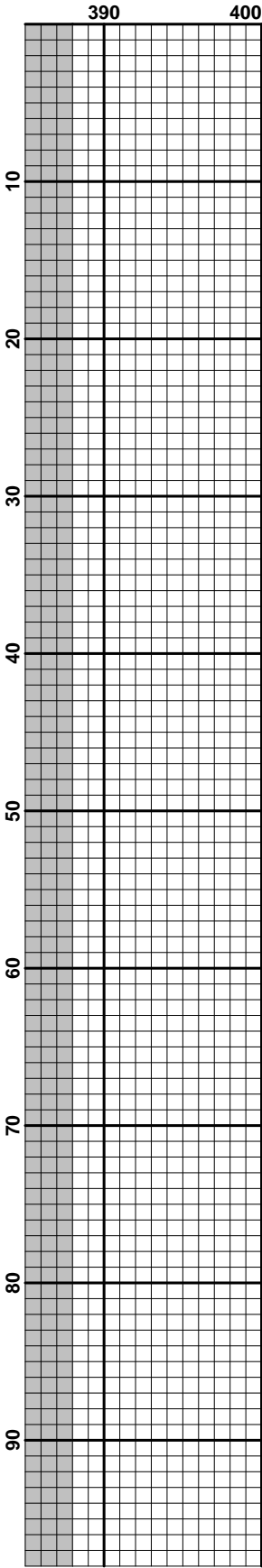


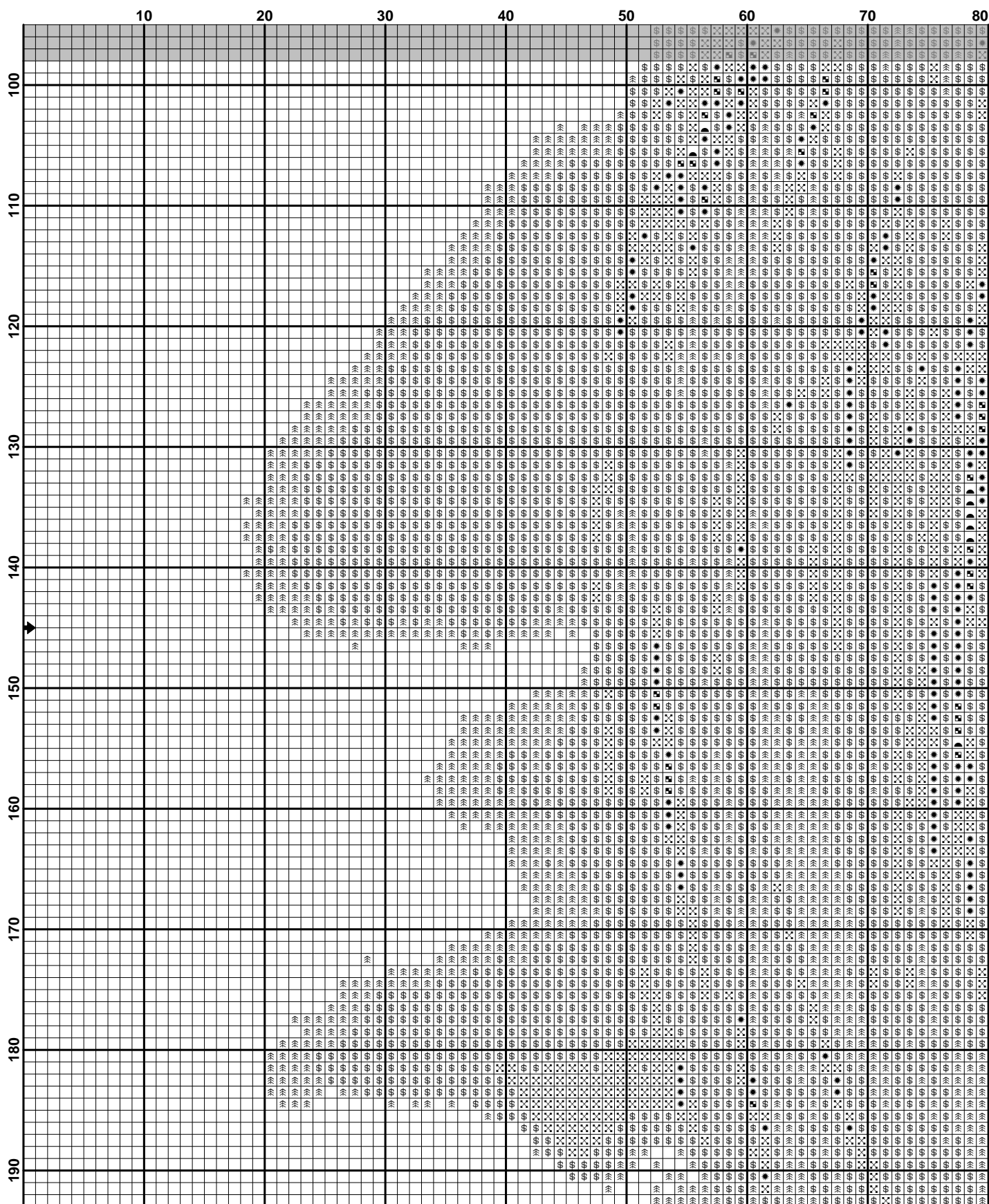


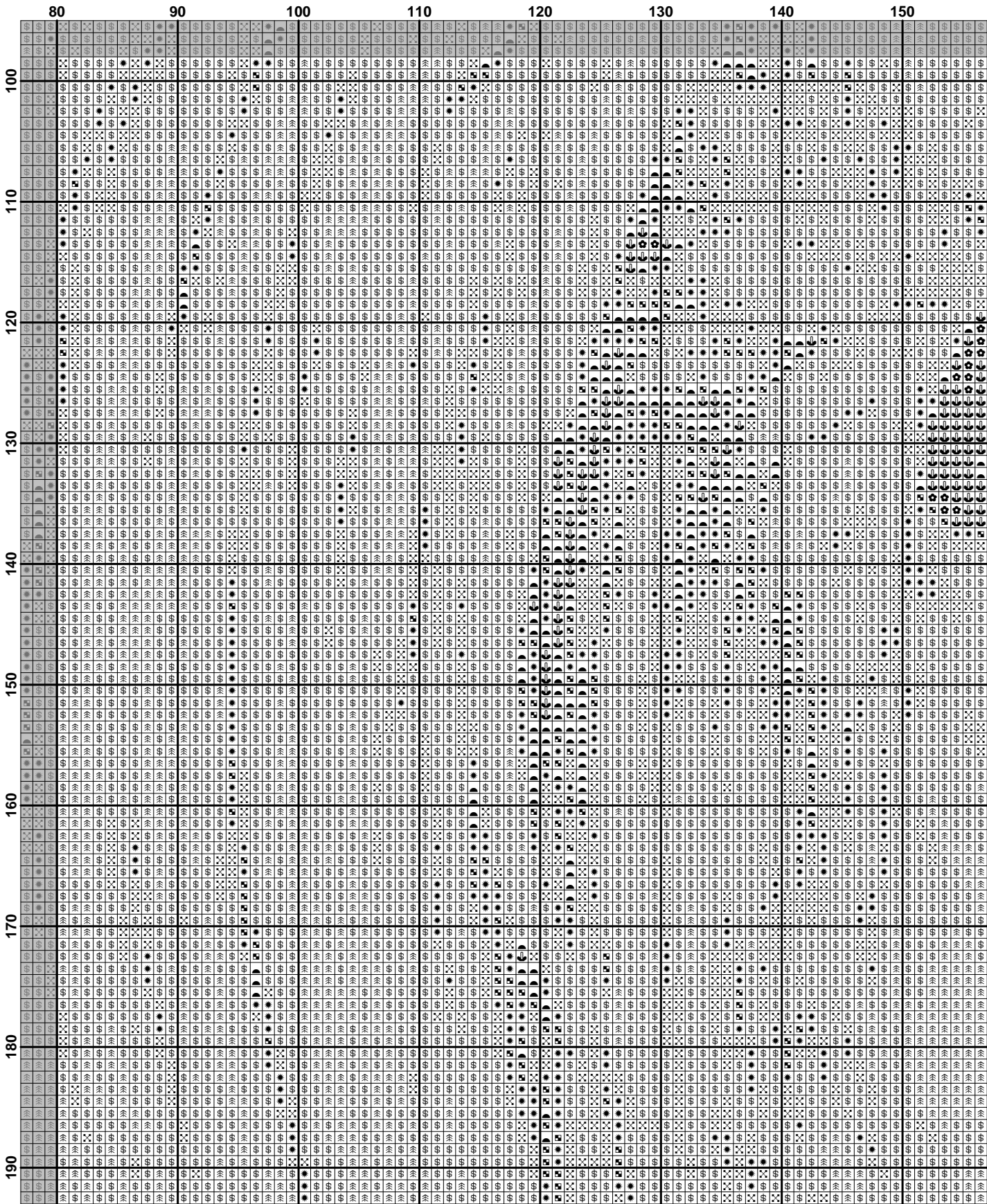
[illegible]

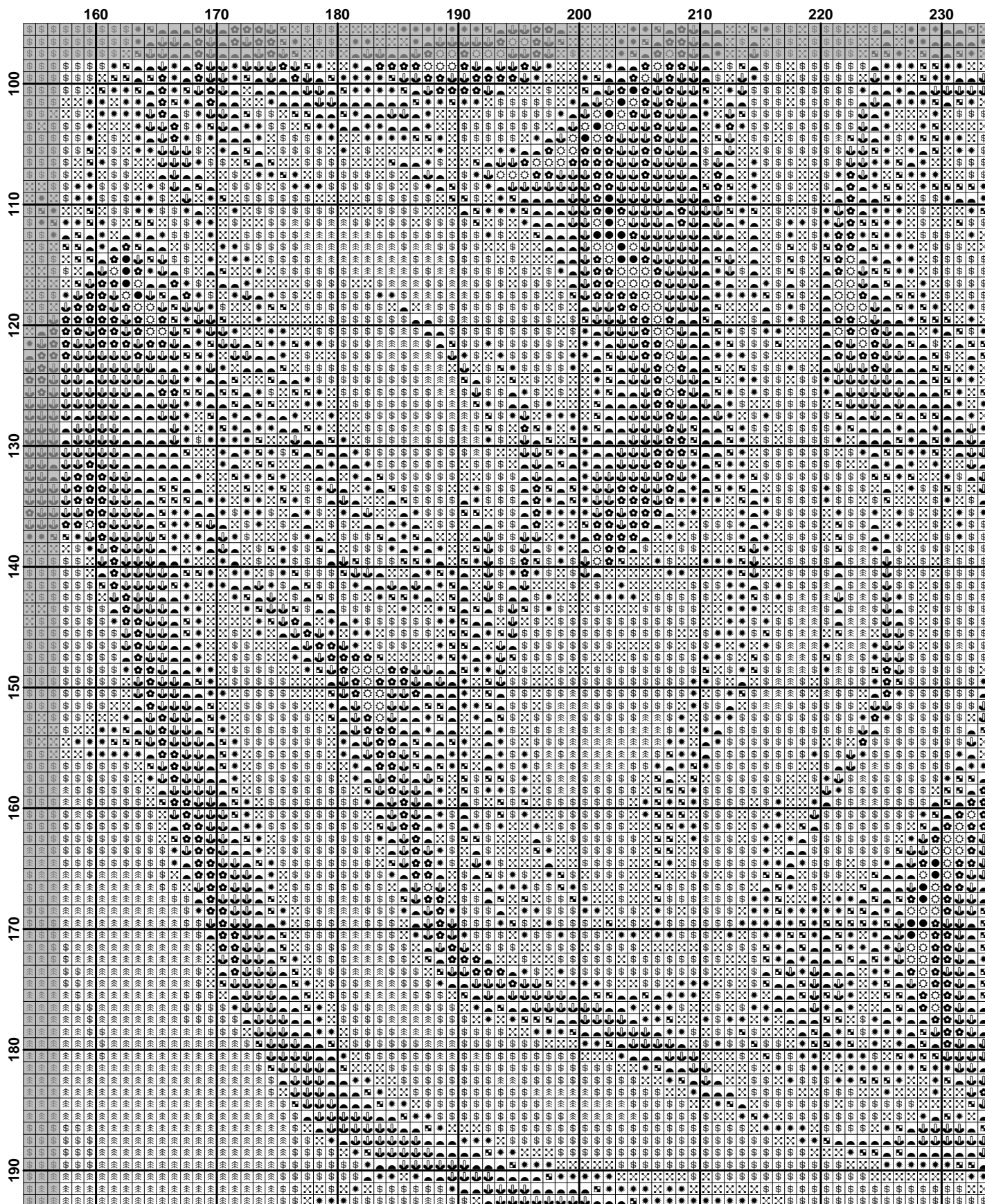


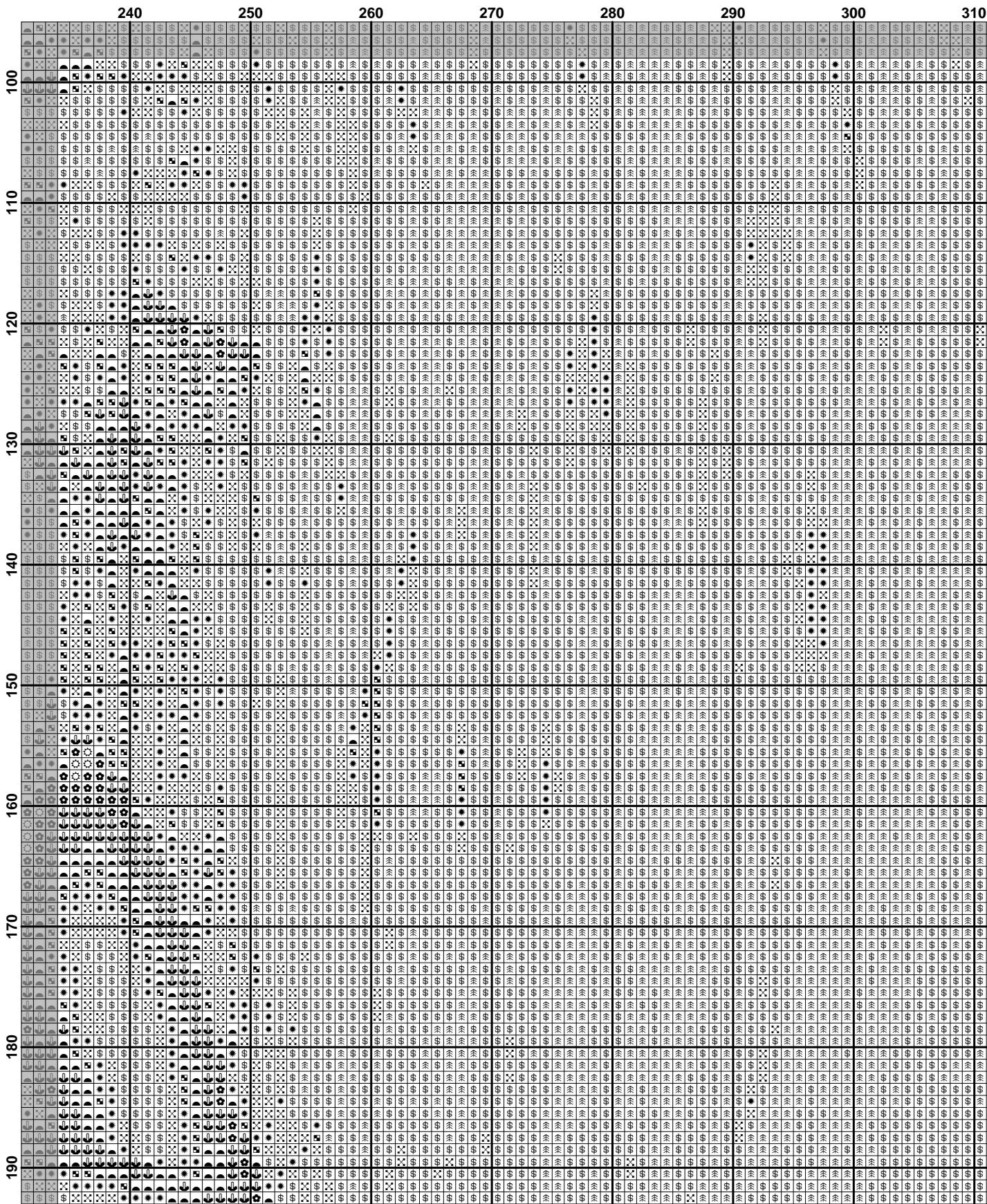
	310	320	330	340	350	360	370	380
10								
20								
30								
40								
50								
60								
70								
80								
90								



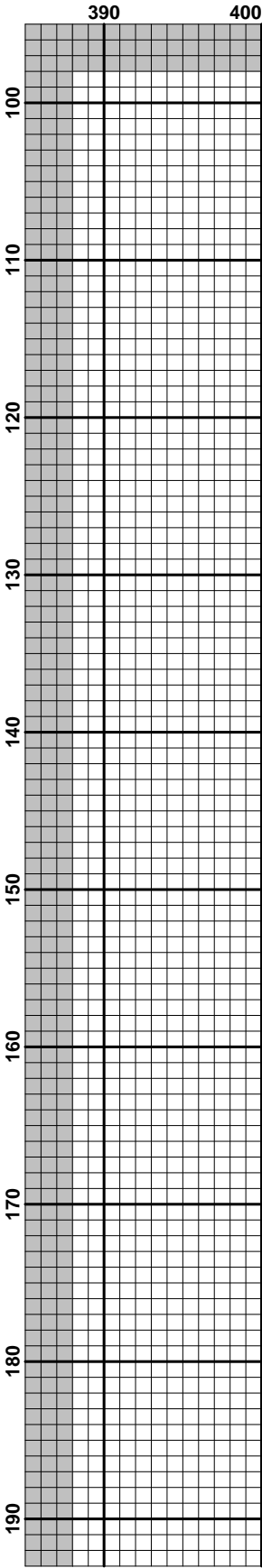




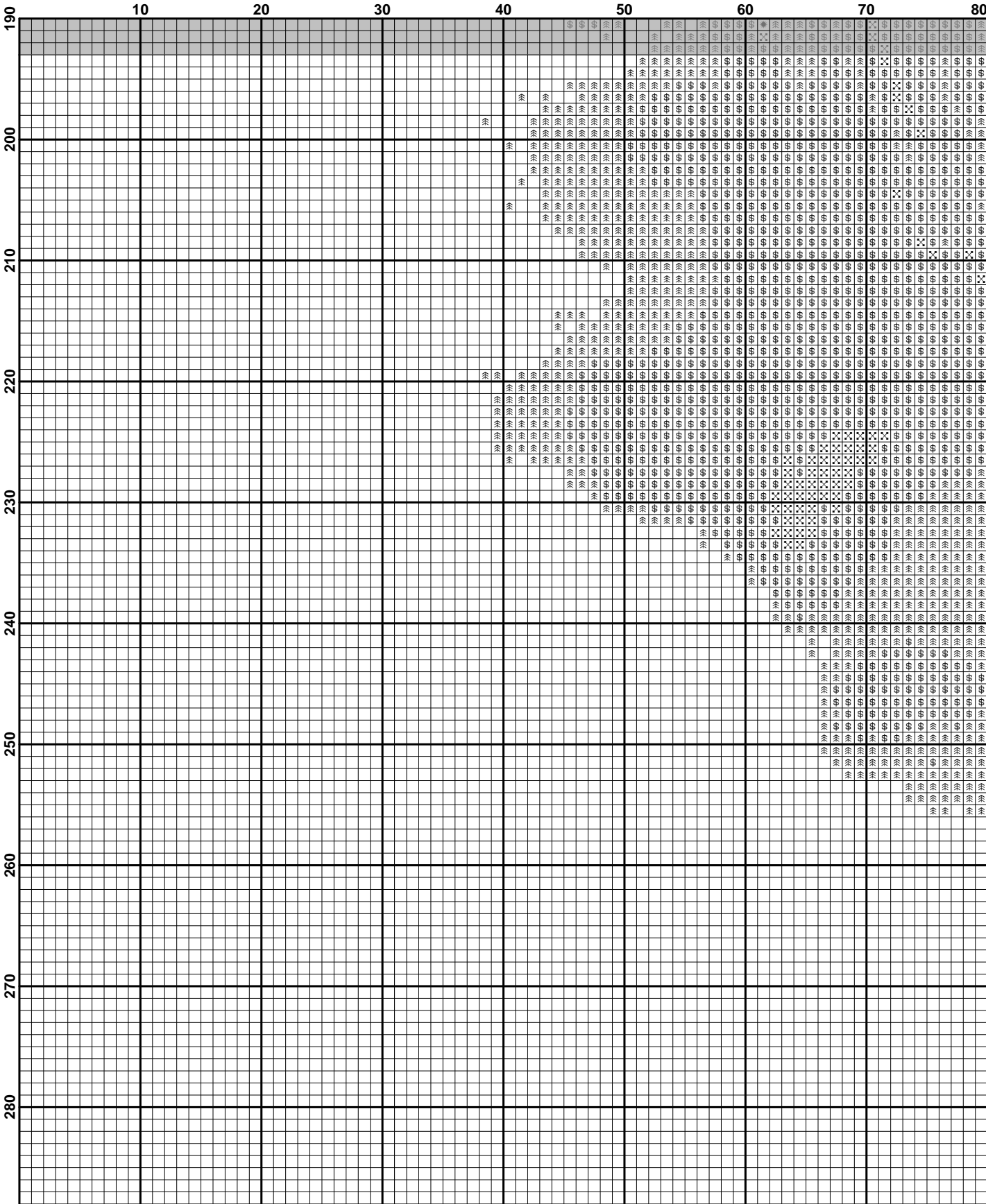




	310	320	330	340	350	360	370	380
100								
110								
120								
130								
140								
150								
160								
170								
180								
190								







	80	90	100	110	120	130	140	150
190								
200								
210								
220								
230								
240								
250								
260								
270								
280								

	160	170	180	190	200	210	220	230
190								
200								
210								
220								
230								
240								
250								
260								
270								
280								

	240	250	260	270	280	290	300	310
190								
200								
210								
220								
230								
240								
250								
260								
270								
280								

